

© 2026 ACDC Dynamics (Pty) Ltd. All rights reserved. ACDC Dynamics® is a registered trademark of ACDC Dynamics (Pty) Ltd. All trademarks are the property of their respective owners.

CURRENT CRAZE

Valid from 1 Apr - 30 Jun '26. Prices include VAT. Only while stocks last. E&OE | T's & C's apply. Note that actual stock may vary from pictures provided.

More Lighting on Pages 2, 3, 4

JUST IN

LED MOVEABLE OFFICE LIGHT

DL-JF06-100W-CW

R3,029⁰⁰

100W
7000lm (2000lm Down / 5000lm Up)
Full Spectrum | Low Glare
Excellent Colour Rendition

LED FILAMENT BULBS

B60-6W--*

R25⁰⁰

6W

*Add Colour to Code: DL (Daylight), CW (Cool White), WW (Warm White)
*Add Base to Code: E27 | B22

MODULAR FLOOD/SPORT LIGHT IP66

HBB-HD-F4-DL

R17,999⁰⁰

1000W | 140000lm
Beam Angle: 90° | 140lm/W

5 YEAR warranty

LED HIGHBAYS

90° Beam Angle | 160lm/W

3 CCT

Power Adjustable

GY160L-60-100W-CCT

R869⁰⁰

60/80/100W

GY160L-120-200W-CCT

R999⁰⁰

120/150/200W

NEW!

SOLAR PORTABLE PATIO LED LIGHT

RW-TG01-SS200W

R1,719⁰⁰

Lithium 3.7V 20Ah
2300lm Max.
Built-in Bluetooth Speaker & Remote Control

NEW!

CORDLESS POWER TOOLS

VACUUM CLEANER

ZVC777-1

R1,299⁰⁰

20V | 500ml Tank
1 Speed

BLOWER

LCGB777-2

R1,299⁰⁰

20V | Blower & Vacuum in one
C/W Dust Bag

All supplied c/w 1x Battery & Fast Charger

12V MINI ROTARY GRINDER

LCF666-3

R729⁰⁰

6 Speed | Spindle Lock
Supplied in case with 50pc Accessory Set

LEAF BLOWER

ZBL777-1

R1,099⁰⁰

Max Air Volume 500m³/h
Light Weight & Compact
2 Speed

More Tools on Page 8

DECORATIVE LAMPS

JUST IN

More Decorative Lights on Page 3

RN-G1880-A **RN-G1880-S** **RN-ST-G125TR-A** **RN-ST-G125TR-S**

R339⁰⁰ **R339⁰⁰** **R219⁰⁰** **R219⁰⁰**

4W | E27 | Loop 4W | E27 | Loop 4W | E27 | Loop 4W | E27 | Loop

RN-ST-G128SR-A **RN-ST-G128SR-S**

R209⁰⁰ **R209⁰⁰**

4W | E27 | Loop 4W | E27 | Loop

NEW!

WIFI IRRIGATION CONTROLLERS

The controller can operate 24VAC Solenoid Valves with 30 On/Off schedules that can be set daily or on specific days of the week on the App.

AS-IC-4C **AS-IC-8C**

R1,419⁰⁰ **R1,589⁰⁰**

4 Channels | 24VAC 8 Channels | 24VAC

WORKS WITH amazon alexa **works with the Google Assistant**

ACDC SMART SWITCH

WiFi Control App Control Remote Switching Count Down Timer Set Timers & Schedules Share Control with Others

Note: Power Supply & Solenoid Valves to be ordered separately

NEW!

SMART FINGERPRINT PADLOCK IP65

10 Users Max | Shackle Size: 9mm | Size: 53 x 86 x 24mm

PST-L3-10

R759⁰⁰

Charging Voltage - 5V USB
Standby time - full year
Ultra low-power fingerprint Algorithm

ACDC SMART SWITCH

App Control Bluetooth Controllable Fingerprint Remote Switching



Lighting



Solar



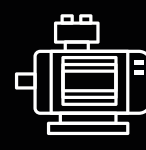
Backup Power



Automation



Wiring



Motor Control



Tools

LED CEILING LIGHTS IP20



LAA12-*

R129⁰⁰

12W | 888lm
Ø260 x 80mm

LAA16-*

R189⁰⁰

16W | 1184lm
Ø300 x 98mm

LAA20-*

R229⁰⁰

24W | 1480lm
Ø385 x 100mm

*Add Colour to Code:
CW (Cool White)
DL (Daylight)

CEILING LIGHTS

LAMPS EXCLUDED



GCL-0508-S

R139⁰⁰

1 x 40W | E27
200 x 200mm



GCL-0508-R

R159⁰⁰

1 x 40W | E27
Ø200mm



GCL-0510-S

R159⁰⁰

1 x 40W | E27
250 x 250mm



GCL-0510-R

R199⁰⁰

1 x 40W | E27
Ø250mm

LED CEILING LIGHT FITTINGS IP20



L29199-230

R319⁰⁰

12W | 1200lm
6000K | Ø230mm



L29199-280

R339⁰⁰

15W | 1500lm
6000K | Ø280mm



LAC12

R129⁰⁰

12W | 888lm | 6000K
Ø260 x 100mm



LAC18

R179⁰⁰

18W | 1350lm | 6000K
Ø330 x 100mm



LAC22

R199⁰⁰

22W | 1440lm | 6000K
Ø400 x 100mm

DECORATIVE LIGHTS



HB-1R-6H-BK

JUST IN

R1,249⁰⁰

6 x 40W Max | E14
Matt Black

NEW!

RECESSED LED DOWNLIGHTS



Fitting with
trim ring
installed



DL-B0105--*

R219⁰⁰

5W | 375lm
Cut Out Size: Ø68mm

DL-B0105-SN-*

R229⁰⁰

5W | 375lm
Cut Out Size: Ø68mm

*Add Colour to Code:

CW (Cool White), **WW** (Warm White)

*Add Trim Colours to Code: **BK** (Black), **WH** (White)



RN-AP3-7W-*

R49⁰⁰

7W | 560lm
Cut Out Size: Ø75 mm

*Add Colour to Code:
CW (Cool White),
WW (Warm White)



DL-B010-TRIM-*

R79⁰⁰

Trim Ring for surface look

***BK** (Black), **WH** (White), **SN**
(Satin Nickel)

JUST IN

LED PLASTIC BULKHEADS IP65



*Add Body Colour to Code:
BK (Black), **WH** (White)

BL220-12W--CCT

R229⁰⁰

12W | 840lm
Ø180 x 72mm



BLO220-15W-PIR-BK-CCT

R249⁰⁰

15W | 1350lm
220 x 106 x 60mm



PLASTIC BULKHEAD IP54



CL1132

R139⁰⁰

270 x 155 x 110mm
1 x E27(CFL/LED)

DECORATIVE BULKHEADS IP54

LAMPS EXCLUDED



NS-1851

R709⁰⁰

60W Max. | 2 x E27
300 x 350 x 120mm



NS-1852

R709⁰⁰

60W Max. | 2 x E27
300 x 350 x 120mm



NS-1853

R709⁰⁰

60W Max. | 2 x E27
300 x 350 x 120mm



NS-1854

R709⁰⁰

60W Max. | 2 x E27
300 x 350 x 120mm



HB-1R-8H-BK

R1,369⁰⁰

8 x 40W Max | E14
Matt Black

HB-1R-9H-BK

R1,129⁰⁰

9 x 40W Max | E14
Matt Black

DECORATIVE PENDANT



BCR-1-100-E27-*

R199⁰⁰

Ceiling Rose Kit | Metal
Ø100 x 25mm | 1m Cord

*Add Body colour to code:
VC (Vintage Copper), **B** (Bronze)

LED ECONOMICAL FLOODLIGHTS IP65

230VAC | Beam Angle: 120° | Cool White(5500K)

2
YEAR
warranty

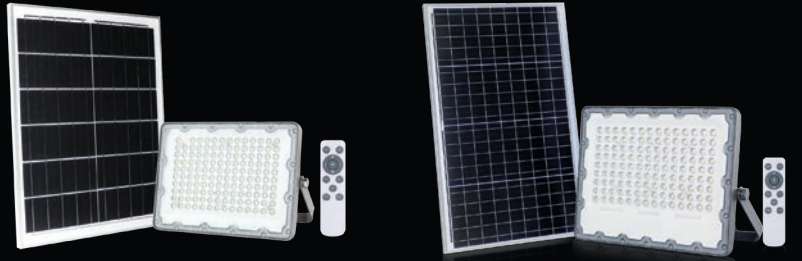


FL-10W-CW R49⁰⁰ 10W 800lm	FL-20W-CW R79⁰⁰ 20W 1600lm	FL-30W-CW R109⁰⁰ 30W 2400lm	FL-50W-CW R149⁰⁰ 50W 4000lm
FL-100W-CW R229⁰⁰ 100W 8000lm	FL-150W-CW R399⁰⁰ 150W 12000lm	FL-200W-CW R469⁰⁰ 200W 16000lm	FL-400W-CW R1,199⁰⁰ 400W 32000lm

ECO FLOOD LIGHTS WITH REMOTE IP65



TK-03-20W R439⁰⁰ 3.2V/5Ah Battery 20W / 400lm 6W PV Panel	TK-03-60W R679⁰⁰ 3.2V/10Ah Battery 60W / 800lm 10W PV Panel
--	--



TK-03-100W R869⁰⁰ 3.2V/15Ah Battery 100W / 1200lm 15W PV Panel	TK-03-200W R969⁰⁰ 3.2V/20Ah Battery 200W / 1800lm 20W PV Panel
---	---



TK-03-300W R1,999⁰⁰ 3.2V/40Ah Battery 300W / 3200lm 40W PV Panel

WALL / POST LIGHT

SOLAR LIGHTING IP65

NEW!



TB03-100W-CCT
R579⁰⁰

LiFePO4 3.2V / 5Ah | Up to 10Hrs | 60W/300lm
5W Monocrystalline



LED POST TOP LIGHT

TT-B-15W-CCT
R1,119⁰⁰

3.2V,15AH | Up to 10Hrs
100W/1500lm | 15W, 6V

ACCESSORIES



TB03-BRKT-WALL
R39⁰⁰

Wall mounting bracket



TB03-BRKT-POST
R139⁰⁰

Mounting pole

SOLAR LED FLOOD LIGHTS

ADJUSTABLE LED & PV PANEL



PIR C/W MOTION SENSING



LD-SSL-8W R569⁰⁰ 8W / 950lm Multiple Mounting Options 2 Working Modes
--

LD-SFL-10W R799⁰⁰ 10W / 1150lm 2 Working Modes 6W PV Panel

OUTDOOR WALL LIGHTS IP54

ABS Body/Glass Diffuser



HR65071
R239⁰⁰
28W Max. | 1 x E27
Ø90 x 120 x 175mm



HR65072
R269⁰⁰
2 x 28W Max.
2 x E27
Ø90 x 120 x 320mm

UP / DOWN LIGHTS IP54 - ABS Body/PC Diffuser



PS1101-GU10-BK
R159⁰⁰
1 x 7W Max | GU10
110 x 110 x 85mm



PS1102-GU10-BK
R159⁰⁰
1 x 7W Max | GU10
110 x 110 x 85mm



PS0970-GU10-BK
R119⁰⁰
1 x 7W Max | GU10
90 x 90 x 92mm



PS1952-GU10-BK
R209⁰⁰
2 x 7W Max | GU10
110 x 195 x 85mm



PS1951-GU10-BK
R209⁰⁰
2 x 7W Max | GU10
110 x 195 x 85mm



PS1670-GU10-BK
R139⁰⁰
2 x 7W Max | GU10
70 x 160 x 92mm



PS0980-GU10-BK
R119⁰⁰
1 x 7W Max | GU10
70 x 90 x 92mm



PS1680-GU10-BK
R139⁰⁰
2 x 7W Max | GU10
70 x 160 x 92mm



P1602-GU10
R159⁰⁰
Max 1 x 6W | GU10
87 x 60 x 120mm

IP44

P1600-GU10
R189⁰⁰
Max 2 x 6W | 2 x GU10
87 x 60 x 158mm

SOLAR WALL LIGHTS C/W MOTION SENSOR IP65



LD-SWL-03W-CL-1
R239⁰⁰
1.5W / 200lm
2 Selectable working modes and back lighting onto wall



LSD-SWL-4W-PLUS
R459⁰⁰
4W / 500lm



PROUD SPONSOR OF



7W VALUE PACK-LED A60 LAMPS

LED-A60-7W-*/6

NON-DIMMABLE

R69⁰⁰

270° Beam Angle

*Add Colour to Code:
DL (Daylight), CW (Cool White),
*Add Base to Code: E27 | B22

VALUE PACK-LED GU10 LAMPS

LED-GU10-6W-*/5

NON-DIMMABLE

R49⁰⁰

120° Beam Angle

*Add Colour to Code:
DL (Daylight), CW (Cool White),
WW (Warm White)

LED A60 LAMPS

NON-DIMMABLE

9W

HS-E27-10W-* **R13⁵⁰**

HS-B22-10W-* **R13⁵⁰**

*Add Colour to Code:
DL (Daylight), CW (Cool White),
WW (Warm White)

LED GU10 LAMPS

KL-GU10-7W-*

NON-DIMMABLE

R21⁰⁰

38° Beam Angle

*Add Colour to Code:
CW (Cool White), WW (Warm White)

DIM-KL-GU10-7W-*

DIMMABLE

R25⁰⁰

38° Beam Angle

*Add Colour to Code:
DL (Daylight), CW (Cool White),
WW (Warm White)

LED TUBE LIGHTING

LEDT8-A2FR-* **R21⁰⁰**
8W | 2FT | T8
Ø26.3mm

LEDT8-A4FR-* **R29⁰⁰**
18W | 4FT | T8
Ø26.3mm

LEDT8-A5FR-* **R36⁰⁰**
22W | 5FT | T8
Ø26.3mm

*Add Colour to Code:
DL (Daylight),
CW (Cool White)

LED ECONOMY WEATHERPROOF LINEAR LIGHTS

LED Tube not included

LEDWPT8-109 **R159⁰⁰**
1 x 9W
660 x 65 x 60mm

LEDWPT8-118 **R179⁰⁰**
1 x 18W
1270 x 65 x 60mm

LEDWPT8-122 **R249⁰⁰**
1 x 22W
1570 x 65 x 60mm

LED HEX SYSTEMS IP20

HEX-300-5W-DL **R49⁰⁰**
230VAC | 5W
600lm | 6000K
300 x 22 x 35mm

HEX-440-8W-DL **R65⁰⁰**
230VAC | 8W
960lm | 6000K
440 x 22 x 35mm

LINKING ACCESSORIES

HEX-XC **R10⁰⁰**
X Connector

HEX-120C **R10⁰⁰**
120° Connector

HEX-LC **R10⁰⁰**
L Connector

HEX-YC **R10⁰⁰**
Y Connector

HEX-TC **R10⁰⁰**
T Connector

HEX-P-IN **R10⁰⁰**
5m Power input cable

HEX-IC **R10⁰⁰**
Straight Connector

LEDWPT8-209 **R169⁰⁰**
2 x 9W
660 x 95 x 60mm

LEDWPT8-218 **R239⁰⁰**
2 x 18W
1270 x 95 x 60mm

LEDWPT8-222 **R289⁰⁰**
2 x 22W
1570 x 95 x 60mm

SPlicing FRAME PANEL LIGHT

SEC-L-PL225-40W-CCT **R359⁰⁰**
40W | 4000lm
595 x 595 x 20mm

5 YEAR warranty

3 CCT

BACKLIT PANELS

DFL-P0606-40W-CCT **R399⁰⁰**
40W | 4400lm
595 x 595 x 30mm

DFL-P1206-64W-CCT **R829⁰⁰**
64W | 7040lm
1195 x 595 x 30mm

DFL-P1203-40W-CCT **R439⁰⁰**
40W | 4040lm
1195 x 295 x 30mm

LED SURFACE OFFICE FIXTURES

LED Tubes included | Daylight (6000K)

LU-509-2X8W **R299⁰⁰**
2 x 8W | 1600lm
628 x 164 x 60mm

LU-509-2X18W **R409⁰⁰**
2 x 18W | 3400lm
1238 x 164 x 60mm

LU-509-2X22W **R499⁰⁰**
2 x 22W | 3800lm
1538 x 164 x 60mm

SURFACE LED LIGHT PANEL

DFL-OCL12-32W-CCT **R799⁰⁰**
32W | 85-265VAC
1240 x 150 x 34mm

NEW! FLUSH MOMENTARY PUSH BUTTON HEADS

R25⁰⁰ EACH



- TJ2030-0AM10 22mm Red
- TJ2030-0AM20 22mm Green
- TJ2030-0AM30 22mm Yellow
- TJ2030-0AM40 22mm Blue
- TJ2030-0AM50 22mm White

TJ/TS PUSHBUTTON RANGE

CONTACT BLOCKS C/W COLLAR

TJ2111-EZ02 2NC R39⁰⁰	TJ2111-EZ20 2NO R39⁰⁰
TJ2111-EZ01 1NO R25⁰⁰	TJ2111-EZ10 1NC R25⁰⁰
TJ2111-EZ11 1NO + 1NC R39⁰⁰	

E-STOP HEAD Ø40MM

TJ2010-0HL10 Twist Release 22mm Red R39⁰⁰	TS2010-0TL10 Push-Pull with indication 22mm Red R129⁰⁰
--	---

CONTROL STATION ENCLOSURES IP65

LAY5-1YB 1 Hole Yellow with shroud Plastic R199⁰⁰	LAY5-JBE01 1 Hole Yellow Plastic R59⁰⁰	LAY5-BE01 1 Hole Grey Plastic R69⁰⁰	LAY5-BE02 2 Hole Grey Plastic R89⁰⁰	LAY5-BE03 3 Hole Grey Plastic R99⁰⁰
---	--	---	---	---

DOUBLE PUSHBUTTON HEAD



TS2012-0LM21

R129⁰⁰

Red Flush / Green Flush
Can be illuminated
22mm



COMPACT BOREHOLE DOL STARTER IP56



WITH MOTORSCOPE RELAY

TRIO PANEL

R5,299⁰⁰

Pump controller for 400V 3Ph Motors 0.37 - 5.6kW

DOL BOREHOLE PUMP CONTROL PANEL IP54



WITH MOTORSCOPE RELAY

TRIO-SP5.6

R6,099⁰⁰

Pump controller for 400V 3Ph Motors 0.37 - 5.6kW

BATTERY COMBINER BOXES

- BAT-COMBINER-300A
- BAT-COMBINER-600A

R2,289⁰⁰ **R2,799⁰⁰**

300A Battery Combiner Box C/W 2 x 25x6mm Busbars 600A Battery Combiner Box C/W 2 x 30x10mm Busbars

AC COMBINER BOXES

For Residential Applications



AC-COMBINER-5K

R1,249⁰⁰

Up to 5kw Off-grid or Hybrid Inverters

AC-COMBINER-8K

R1,569⁰⁰

Up to 8kw Off-grid or Hybrid Inverters

AC-COMBINER-15K-3P

R4,429⁰⁰

Up to 15kw 3PH Hybrid Inverters

SWHC-4K-MAX

R4,999⁰⁰

4KW | 120-340VDC Heating Power: 4KW max. (AC/DC) MPPT Operating : Voltage: 120-340VDC

SOLAR WATER HEATING CONTROLLER IP65



JUST IN

LOW VOLTAGE HYBRID INVERTERS

- BMS Communication (incl.)
- c/w Full Remote Monitoring & Control



5 YEAR warranty



Up to 6200 cycles @80% DoD (0,5C)

LITHIUM BATTERIES



5 YEAR warranty

Rack Mount



Wall Mount



Wall Mount



Wall Mount

SE-H-6K 48VDC

R18,529⁰⁰

6000W | 230VAC | 1PH
PV Input: 550VDC
Max. 9000W

SE-H-10K 48VDC

R31,689⁰⁰

10 000W | 230VAC | 1PH
PV Input: 600VDC
Max. 15000W

LFP52V-100-5.2K-RM

R16,359⁰⁰

51.2V | 5120Wh | 100Ah
Max. Discharge: 100A

LFP52V-100-5.2K-WM

R16,100⁰⁰

51.2V | 5120Wh | 100Ah
Max. Discharge: 100A

LFP52V-200-10K-FS

R33,999⁰⁰

51.2V | 10240Wh | 200Ah
Max. Discharge: 150A

LFP52V-280-14.3K-FS

R28,999⁰⁰

51.2V | 14336Wh | 20Ah
Max. Discharge: 200A

LV5.0 LOW VOLTAGE BATTERIES



7 YEAR warranty



2 YEAR warranty

OFF-GRID INVERTERS

2 YEAR warranty



BYD-LV5.0-5KWH

51.2V | 5kWh | Max. Up to 32 in Parallel

R16,299⁰⁰



XANADU-10K 48VDC

R20,299⁰⁰

10kW | 230VAC | Dual AC Output
Lithium or Lead Acid Battery | 48VDC
BMS Communication (incl.)
PV Input: 500VDC | Max. 12000W
2 MPPT Trackers



IP22

S6-EO1P5K-48-P

R7,999⁰⁰

LOW VOLTAGE
5KW | 1PH | 48VDC
PV Input: 6500W Max
1 MPPT | 500VDC

HYBRID GRID-TIED INVERTERS

LOW VOLTAGE ENERGY STORAGE INVERTERS



IP22

10 YEAR warranty

S6-EHIP6K-L-PLUS

R17,159⁰⁰

6KW | 1PH | 48VDC
PV Input: 12000W Max
2 MPPT | 500VDC

S6-EHIP8K-L-PLUS

R26,159⁰⁰

8KW | 1PH | 48VDC
PV Input: 16000W Max
2 MPPT | 500VDC

WE'VE RELAUNCHED!

FRESH LOOK. SAME PASSION. MORE POWER.

Visit our new and improved website:

acdexpress.com

Powered By peach 100% SECURE



DOMESTIC SOCKETS & SWITCHES



B7001

R19⁰⁰

1 Lever 1 Way



B7002

R28⁰⁰

2 Lever 1 Way



B7003

R34⁰⁰

3 Lever 1 Way



B7004

R42⁰⁰

4 Lever 1 Way



B7400

R49⁰⁰

1 x 16A Switched Socket (4x2)



B7401

R49⁰⁰

1 x 16A Switched Socket (4x4)



B7402

R59⁰⁰

2 x 16A Switched Socket (4x4)



B7403

R69⁰⁰

1 x N-Type + 1 x 16A Switched Sockets



B7404

R129⁰⁰

1 x N-Type + 1 x 16A + 1 USB 5V, 500mA Outputs



B7406

R59⁰⁰

1 x N-Type + 1 x 16A Switched Socket (4x2)



B7407

R79⁰⁰

3 x N-Type + 1 x 16A Switched Socket (4x4)

25A DAYLIGHT SWITCH

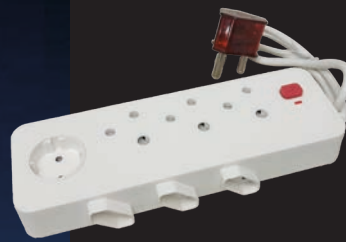
NEW!



LA25

R119⁰⁰

Fixed Lux & On/Off Timer



EXTENDERS

MS2-331-SP

R189⁰⁰

3xSA+3x2-Pin +Schucko Extender C/W Surge + O\L Prot.



MS2-551-SP

R229⁰⁰

5XSA+5X2-Pin +Schucko Extender C/W Surge + O\L Prot



YJ-N43-1F

R149⁰⁰

4 x 16A + 3 x 2Pin Euro + 1 x Schuko With overload protection | c/w 0.5m cord



YJ-N33F

R139⁰⁰

3 x 16A + 3 x 2Pin Euro + 1 x Schuko With overload protection | c/w 0.5m cord

HEAVY DUTY EXTENSION CORD

TT-F01-3M

R129⁰⁰

3m

TT-F01-5M

R189⁰⁰

5m

TT-F01-10M

R389⁰⁰

10m

TT-F01-15M

R499⁰⁰

15m

TT-F01-20M

R649⁰⁰

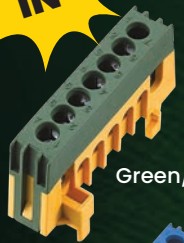
20m

1.5mm² x 3 | 16A H07RN-F Black Rubber Cable & Rubber Janus Coupler



NEUTRAL & EARTH BARS, DISTRIBUTION BLOCKS

JUST IN



Green/Yellow

HL16N7-BK

R29⁰⁰

Black

HL16N7-BL

R29⁰⁰

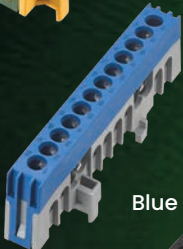
Blue

HL16N7-G/Y

R29⁰⁰

Green/Yellow

7 Way | Bus Size: 6x9 | 63A | Length: 59mm | 2.5-16mm²



Blue

HL16N12-BK

R39⁰⁰

Black

HL16N12-BL

R39⁰⁰

Blue

HL16N12-G/Y

R39⁰⁰

Green/Yellow

12 Way | Bus Size: 6x9 | 63A | Length: 91mm | 2.5-16mm²



Black

HL16N15-BK

R49⁰⁰

Black

HL16N15-BL

R49⁰⁰

Blue

HL16N15-G/Y

R49⁰⁰

Green/Yellow

15 Way | Bus Size: 6x9 | 63A | Length: 110mm | 2.5-16mm²

PLUG TOPS



RA310BK

R25⁰⁰

16A Janus Coupler Rubber Material



ISDPT03

R15⁰⁰

White 15A SA with handle



RA300BK

R15⁰⁰

Rubber Plug Top 16A



SACP/4

R8⁵⁰

Three Pin Plug Cover 4 Sets/pack

WEATHERPROOF MODULAR BOXES IP55



WP5-2G

R69⁰⁰

Empty | 2 Gang



WP5-3G

R79⁰⁰

Empty | 3 Gang



WP5-4G

R109⁰⁰

Empty | 4 Gang



WP5-6G

R179⁰⁰

Empty | 6 Gang

See our range of modules in store

WEATHERPROOF SWITCHES IP66 20A Contact Rating



WPI-1L-1W

R159⁰⁰

1 Gang 1 Way



WPI-1L-2W

R169⁰⁰

1 Gang DP Isolator



WPI-PB

R169⁰⁰

Bell Press



WPI-2L-1W

R189⁰⁰

2 Gang 1 Way



WPI-3L-1W

R219⁰⁰

3 Gang 1 Way



RESIN INLINE JOINT KIT for Cables up to 1KV



Scotchcast
40G Resin



Integrated
Pouring
Spout and
Contact free
design

3M-92-NBA0

OD: 4-16mm
1.5-4mm²

R289⁰⁰

3M-92-NBA1

OD: 10-22mm
1.5-10mm²

R369⁰⁰

3M-92-NBA2

OD: 12-25mm
6-16mm²

R459⁰⁰

3M-92-NBA3

OD: 13-32mm
16-25mm²

R539⁰⁰

3M-92-NBA4

OD: 18-36mm
25-50mm²

R899⁰⁰

3M-92-NBA5

OD: 19-45mm
50-95mm²

R1,279⁰⁰

3M-92-NBA6

OD: 27-54mm
70-120mm²

R3,019⁰⁰

3M-92-NBA7

OD: 29-64mm
120-240mm²

R5,109⁰⁰

ZZ CLAMPS

304 Stainless Steel | Non-Removable Locking System

NEW!



ZZCLAMP-150

Ø150mm x 19mm

R169⁰⁰

ZZCLAMP-250

Ø250mm x 19mm

R179⁰⁰

ZZCLAMP-280

Ø280mm x 19mm

R189⁰⁰

ZZSOCKET-1/2

R279⁰⁰

Drive Socket 1/2 Inch



ZZGEARLOCK-TOOL

R209⁰⁰

Gear Lock Tool

SPLICING CONNECTORS

Solid Wire: 0.2-4mm² | Flexi Wire: 0.14-4mm²



221-415/8

R219⁰⁰

PACK OF 85 Way
32A

221-413/12

R179⁰⁰

PACK OF 12 | 3 Way
32A

221-412/16

R179⁰⁰

PACK OF 16 | 2 Way
32A

221-2411/12

R189⁰⁰

INLINE | PACK OF 12
1 Way | 32A

221-420

R39⁰⁰

10 Way | 32A
1 PIECE



L-BOXX MINI SPLICING CONNECTOR KIT

887-850

R2,619⁰⁰

221 L-BOXX Mini Splicing Connector Kit
This kit includes: 221-412(x100), 221-413(x100), 221-415(x25),
221-500(x2), 221-2411(x30), 221-2503(x1) and 221-2502(x1)



CABLE GLANDS IP68 t techno

THR450-S0-A/5

R219⁰⁰

M16 | 4.0 - 9.5mm
Black

THR451-S2-A/5

R279⁰⁰

M20 | 7.0 - 10.5mm
Black

THR451-S0-E/5

R279⁰⁰

M20 | 10.5 - 14.0mm
Black

THR450-S0-E/5

R219⁰⁰

M16 | 4.0 - 9.5mm
Grey

THR451-S0-A/5

R279⁰⁰

M20 | 10.5 - 14.0mm
Black

THR452-S0-E/5

R299⁰⁰

M25 | 10.5 - 14.0mm
Black

THR452-S0-A/5

R299⁰⁰

M25 | 10.5 - 14.0mm
Black

CIRCUIT BREAKERS

4.5KA C-CURVE DIN MCB - IEC 60947-2 / VC8036



1 POLE

GYM8-1-6C

6A

GYM8-1-10C

10A

GYM8-1-16C

16A

GYM8-1-20C

20A

GYM8-1-32C

32A

GYM8-1-40C

40A

R3200
EACH

GYM8-1-50C

50A

GYM8-1-63C

63A

R3900
EACH

2 POLE

GYM8-2-16C

16A

GYM8-2-20C

20A

GYM8-2-32C

32A

GYM8-2-40C

40A

R8500
EACH

GYM8-2-50C

50A

GYM8-2-63C

63A

R9500
EACH

1 POLE + N

GYM8-1N-16C

16A

GYM8-1N-20C

20A

GYM8-1N-32C

32A

GYM8-1N-40C

40A

R7500
EACH

GYM8-1N-50C

50A

GYM8-1N-63C

63A

R9500
EACH

EARTH LEAKAGE RELAYS

30mA VC8035

2 POLE



GYL8-2-25

25A

GYL8-2-32

32A

GYL8-2-40

40A

R19900
EACH

GYL8-2-63

63A

R18900
EACH



GYM8-1N-16C

16A

GYM8-1N-20C

20A

GYM8-1N-32C

32A

GYM8-1N-40C

40A

R7500
EACH

GYM8-1N-50C

50A

GYM8-1N-63C

63A

R9500
EACH



PREPAID SUBMETERING

CD-BEC21

R105⁰⁰

230VAC | 60A
Single Phase



CD-WBEC62

R2,339⁰⁰

230/400VAC
100A | Three Phase
c/w UIU



CD-WBECNANO

R469⁰⁰

230VAC
60A | Single Phase
c/w UIU



VISIT YOUR NEAREST STORE TO GET YOUR ULTIMATE

ELECTRICAL GUIDE

CATALOGUE 25 / 26



ALPEN DRILL BITS PACK & CHISELS



F4 Forte MB5 Set

ALP MB5

R599⁰⁰

Pack of 5
5/6 x 110mm,
6/8/10 x 160mm



Profi Multicut
PM5 Set

ALP PM5

R649⁰⁰

Pack of 5
4/5/6/8/10mm



Force X MB5 Set

ALP805000051

R719⁰⁰

Pack of 5
5/6 x 110mm,
6/8/10 x 160mm

Long Life - Masonry Drill Bit Sets



ALP TSS3

R199⁰⁰

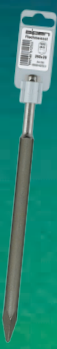
Pack of 3
5/6/8mm



ALP TSS5

R269⁰⁰

Pack of 5
4/5/6/8/10mm



Alpen SDS Plus Chisels

ALP98002501

Pointed 250mm

R379⁰⁰

ALP98102501

Flat 20 x 250mm

R379⁰⁰

ALP98204251

Flat 40 x 250mm

R529⁰⁰

ALP98302251

Gauge 250mm

R679⁰⁰

TROLLEYS



JL-Z100E

R689⁰⁰

Foldable hand trolley
(Steel Frame) Max. load 120kg
Loading platform
350 x 486mm

FW-99G

R2,339⁰⁰

Double Deck Folding Trolley
Max load; Top platform: 20kg,
Bott platform: 50kg
1000 x 613 x 1084mm
c/w 1 basket

CABLE CUTTERS



BM1330

R789⁰⁰

X-PRO Evo 50mm² Shears
Ergonomic Spring
Loaded Design
C/W Holster | Belt Clip



BM1325

R799⁰⁰

X-PRO 50mm² Shears
Ergonomic Spring
Loaded Design
C/W Holster | Belt Clip

MANUAL CRIMPERS



LY-04WF

R239⁰⁰

For insulated boot-lace
ferrules (0.5-6.0mm²)



ZD-501006

R199⁰⁰

Crimping tool for RJ11, RJ12,
RJ45



HS-05H

R279⁰⁰

Hex Crimping Tool For
Non-Insulated Lugs (1.5-25mm²)

CORDLESS POWER TOOLS

All supplied c/w Battery & Fast Charger



LCD777-9SC

R1,899⁰⁰

20V Brushless Hammer Drill
2 Speed | 60Nm Max
13mm Chuck



LCD787-7S

R1,449⁰⁰

20V Brushless Drill
2 Speed | 45Nm Max
10mm Chuck



LCW787-9A

R1,899⁰⁰

20V Brushless Impact Driver
3 Speed & Torque Settings
230Nm Max | 1/4" Hex



LCG777-9

R2,439⁰⁰

20V Brushless Angle Grinder | 0-10000rpm
Spindle 22mm | Adjustable Handle & Guard
Disc Diameter 115/125mm



BT-032

R2,999⁰⁰

1000V
31 Pc Electricians
Back Pack
Tool Kit

1000VDE TOOL KITS

V10-4005

R999⁰⁰

12 Piece 1000V | VDE Tool Set



VDE TOOLS

SCREWDRIVER KIT

VFL-2105

R249⁰⁰

1000V 6 Piece
Screwdriver Set



SCREWDRIVER KIT

VFL-2234

R479⁰⁰

1000V 8 Pc
Screwdriver Set



PROFFESIONAL DIGITAL METERS



TRMS
1000AAC CLAMP

KPS-DCM3000

R2,689⁰⁰

750VAC/1000VDC
1000A AC
20MΩ Resistance



HVAC DMM C/W
BLUETOOTH

KPS-DMM3500BT

R4,399⁰⁰

1000VAC/DC
10A AC/DC
40MΩ Resistance



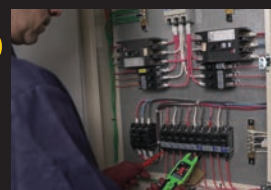
TRMS

2 IN 1 CLAMP/
MULTIMETER

KPS-TP5000HY

R3,899⁰⁰

999.9V/AC/DC
200A AC (Clamp)
50KΩ Resistance



Find out more!
scan now



GAUTENG

Alberton: 011 907 0796
Boksburg: 011 020 3650
Centurion: 012 003 2030
Fourways: 011 465 9802
Gezina: 012 141 0073
Germiston: 011 418 9600
Kempton Park: 010 822 7140

Longmeadow: 010 202 3300
Silverlakes: 012 141 0078
Strijdom Park: 011 251 5600
Strubens Valley: 087 729 0369
Woodmead: 010 055 7166
Vaal: 010 442 4420

KWAZULU-NATAL

Ballito: 032 946 2131
Newcastle: 010 045 0910
Pietermaritzburg: 087 405 0664

Richards Bay: 087 898 8589
Umhlanga: 031 020 0403

NORTH WEST

Brits: 012 880 2767
Hartbeespoort: 012 880 5470
Potchefstroom: 018 880 0602

MPUMALANGA

Middelburg: 013 110 3320
Nelspruit: 013 752 3797
Secunda: 017 631 3531
Witbank: 013 110 0580

Rustenburg: 014 050 0999
Mountain View: 014 880 0612

EASTERN CAPE

Port Elizabeth: 041 110 0010

FREE STATE

Bloemfontein: 051 140 0094

LIMPOPO

WESTERN CAPE

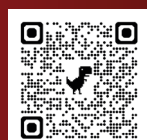
Bellville: 021 946 1390
Hermanus: 021 020 1441
Paarden Eiland: 021 036 0996
Paarl: 022 110 0010
Richmond Park: 021 492 2000
Somerset West: 087 405 0566
Vredenburg: 010 055 7213
Worcester: 023 342 0231

Polokwane: 015 590 8565

WE'RE EXPANDING INTO AFRICA

ESWATINI: MANZINI

Matshapa: +268 3555 2989



Visit our Website